



# AS 260

## Intraoral Scanner



[www.allied-star.com](http://www.allied-star.com)



# Scanning Elevated

Introducing the AS 260, the latest milestone in intraoral scanning.

Its advanced features elevate performance without compromising on the desirable qualities that you have come to expect.



---

# Accuracy from New Heights

AS 260 incorporates numerous technical advancements, including an innovative optical structure that enhances depth of field, an upgraded hardware platform to handle increased data input, and an exclusive algorithm that effectively leverages extensive information.

Consequently, dentists can expect enhanced clinical clarity, improved scanning experiences, and improved data integrity.



---

## 20µm Accuracy

Full arch scanning



---

## 18mm Depth of Field



---

## Improved Data Integrity

---

# Brand New Design

The AS 260's sleek and modern design, coupled with its lightweight construction, makes it a delight to use and behold.

The AS 260's **detachable cable** feature significantly simplifies the process of replacing a damaged cable, eliminating the need for complex disassembly and reducing downtime. With this cost-effective feature, dentists save valuable time and minimize disruptions to workflow.



# Exclusive Architecture

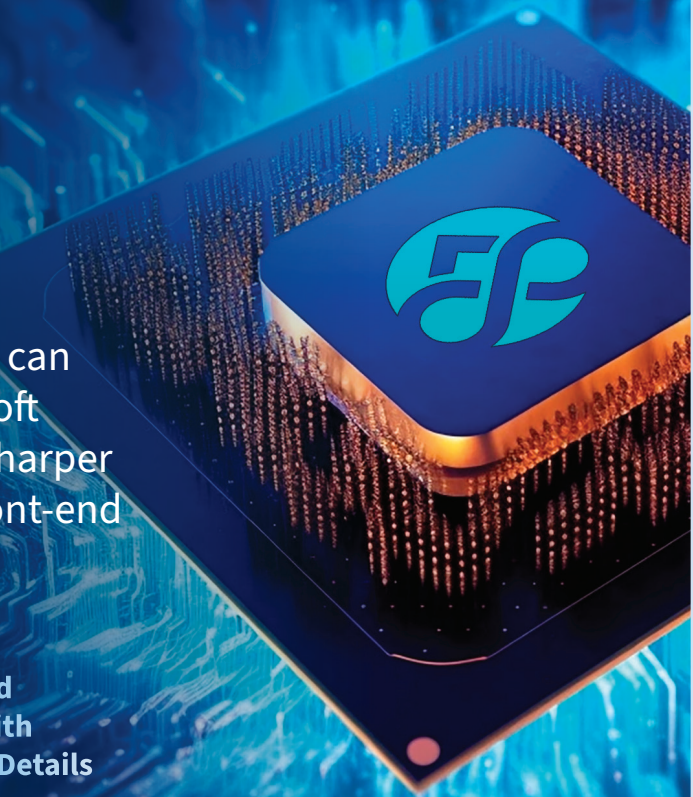
AS 260 presents a future-proof framework that unlocks new capabilities for years to come. Consequently, dental professionals can anticipate remarkable enhancements in soft tissue removal and models imbued with sharper details, courtesy of the state-of-the-art Front-end Image Processing Algorithms.



**Improved AI Assisted Soft-tissue Removal**



**Improved Model with Sharper Details**



# The Alliedstar Experience

Signature design elements that focus on ease of use, user comfort and efficiency, only from Alliedstar.



Calibration Free



Powered by  
Single USB Cable



No Pre-Heating or  
Powder Required



Remote Control



Duo Scan  
Buttons



Two Sizes of  
Autoclavable Tips



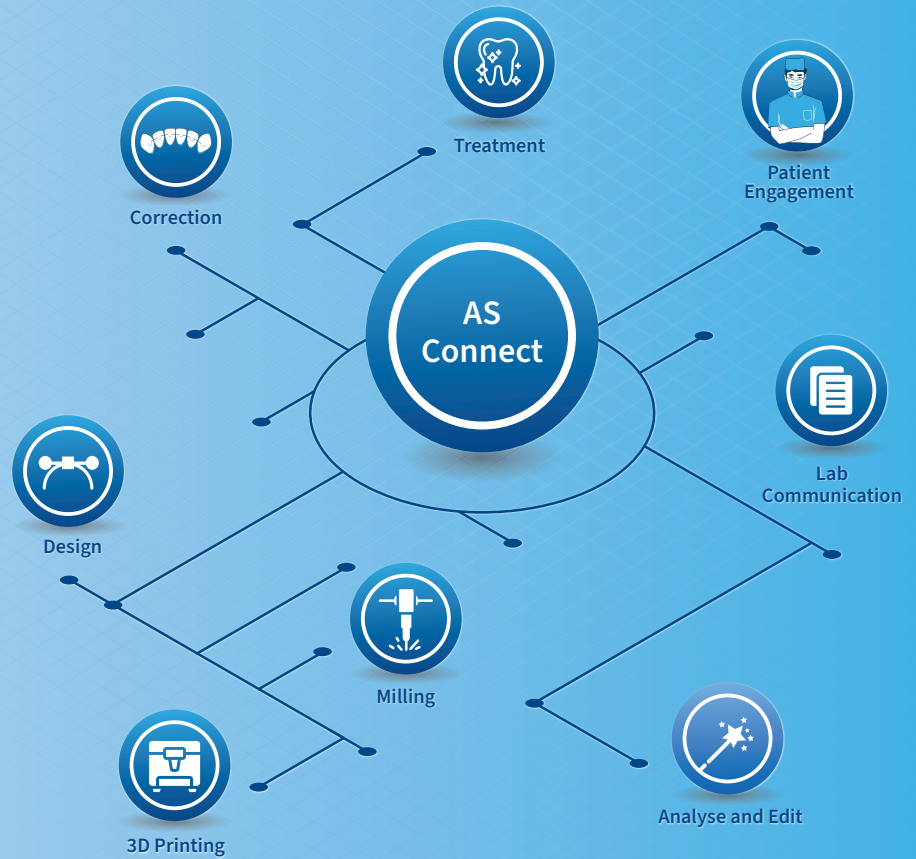
175g  
Light Weight



Shock  
Resistance

# AS Connect

AS Connect is the perfect software suit companion for AS 260, a comprehensive solution helps you take full advantage of the digital workflow.



## Integrated Workflow

AS Connect's integrated workflow allows you to easily manage and track orders for patient and case management, with a dashboard and analytics for added convenience.

We understand the importance of seamless integration between software platforms for your clients' success. That's why we are collaborating with leading industry partners such as **exocad**, **easyRX**, **OnyxCeph** and many more to provide a smooth user experience through tight software platform integration.



Third-party Integrations



Patient and Case Management



Order Management



Dashboard and Analytics


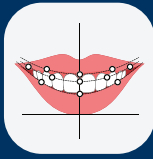



## Blooming Eco-system

Applications from Alliedstar and third-party integrations offer endless possibilities for extending capabilities and engaging patients.

## Data Safety

At Alliedstar, your data safety is our top priority. That's why we have dedicated servers on every continent to provide exclusive storage silos, ensuring the utmost protection for your data.

### Available in the AS Connect Store

				
Model Builder	Smile Design	Mesh Compare	Ortho Simulation	Oral Health Report

## Precise Data Capture with ScanPro

With ScanPro, part of AS Connect, capturing precise data has never been easier. The software's intuitive workflow and proprietary AI enhancement make it simple to capture, edit, and deliver high-quality, open-format data with confidence.

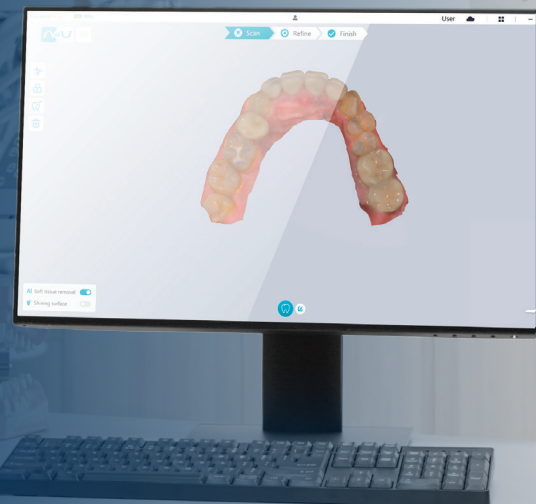


### Accessible Requirements

ScanPro requires no expensive hardware, making it a cost-effective investment for your practice.



### True Tone Capture



# Specifications

<b>Handpiece</b>	Dimensions(mm)	175 x 49 x 39 mm	<b>Power Adaptor</b>	No need
	Weight	175 g	<b>Remote Control</b>	Yes
<b>Scanning</b>	Full-arch Accuracy	20 μm	<b>Calibration</b>	Calibration Free
	Depth of Field	18 mm	<b>Tip</b>	Size (mm) 22 x 18 mm(L) 18 x 16 mm(S)
	Field of View (mm)	16 x 14 mm(L) 12 x 12 mm(S)		Autoclavable
	Capture Button	Duo Buttons		

## About Alliedstar

Founded in 2019, Shanghai, Alliedstar Medical Equipment Co., Ltd. focus on digital dentistry and imaging solutions. The core founding members came from the industry with profound understanding and know-hows.

Our aim is to provide world-class products with exceptional quality and reliability to help dentist providing better care and build more smiles.



## Contacts

### Headquarter

Room 138, Building C  
No. 2305, Zuchongzhi Road  
Pudong, Shanghai, China

### Sales Inquiry

sales@allied-star.com

## Distributor



info@nationaldental.com  
1-800-392-1171  
203-89 Collier Street, Barrie